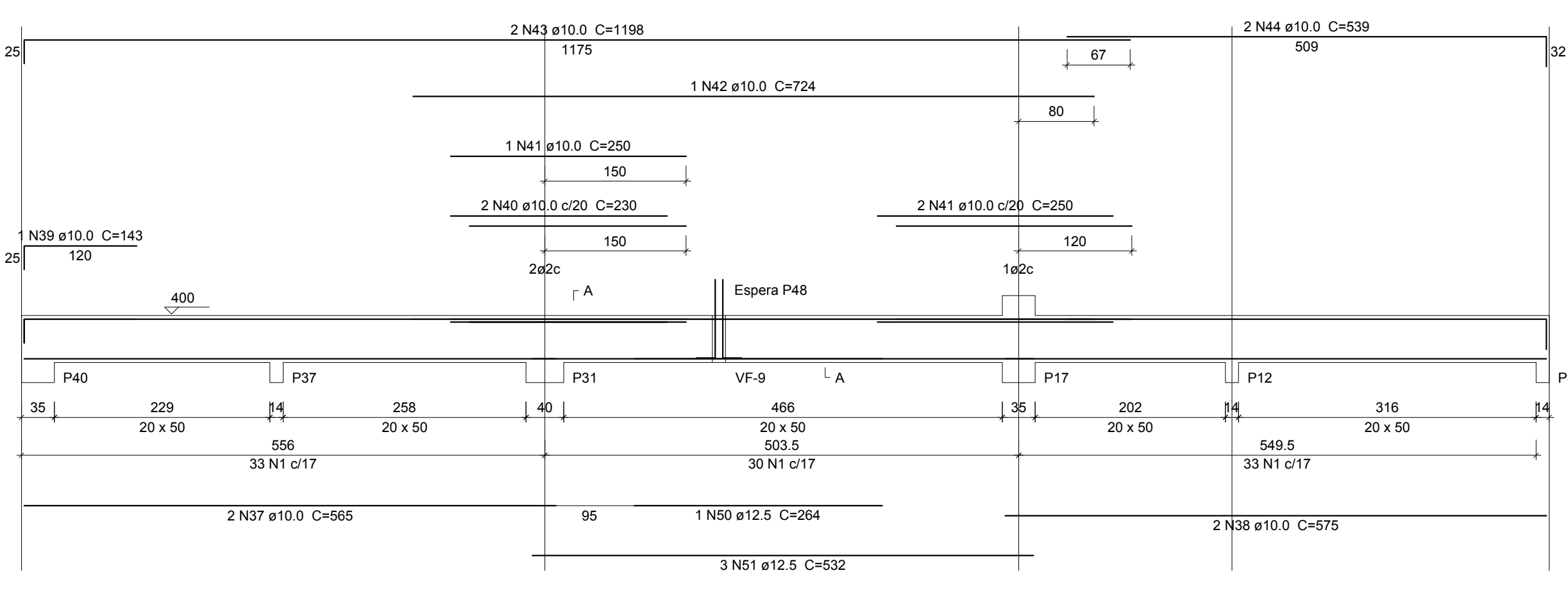
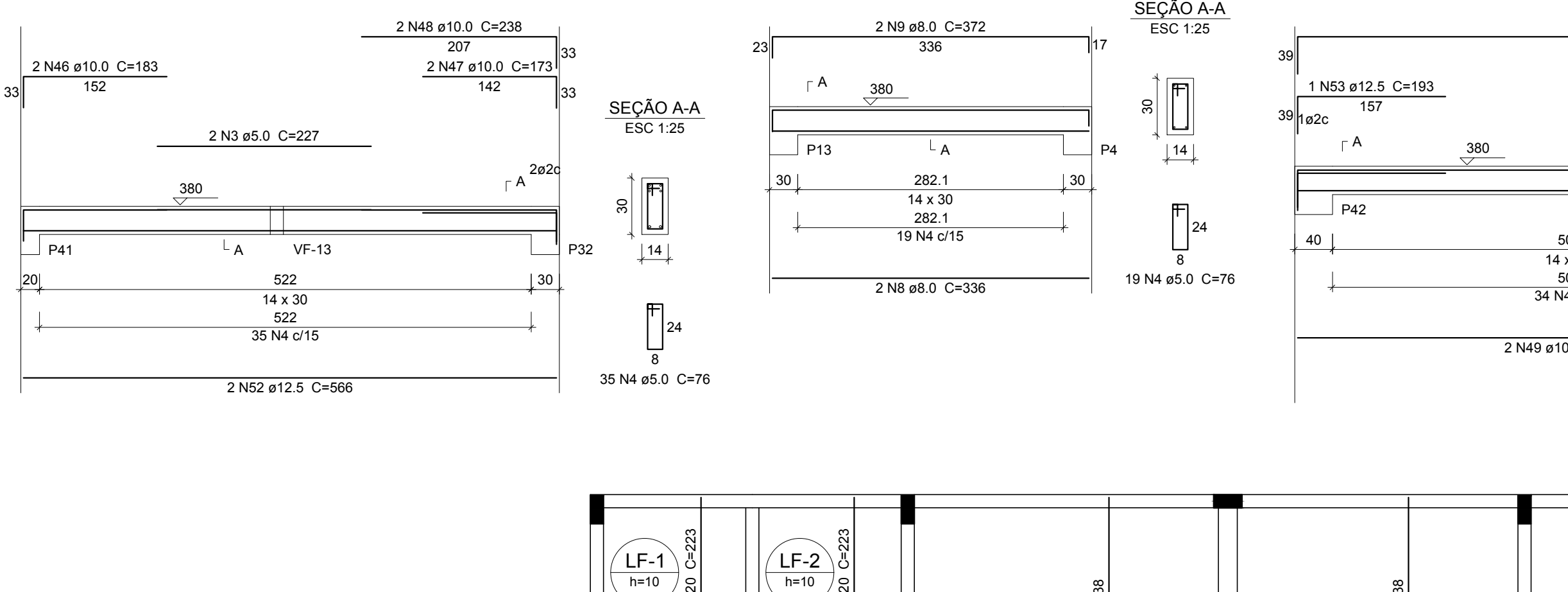


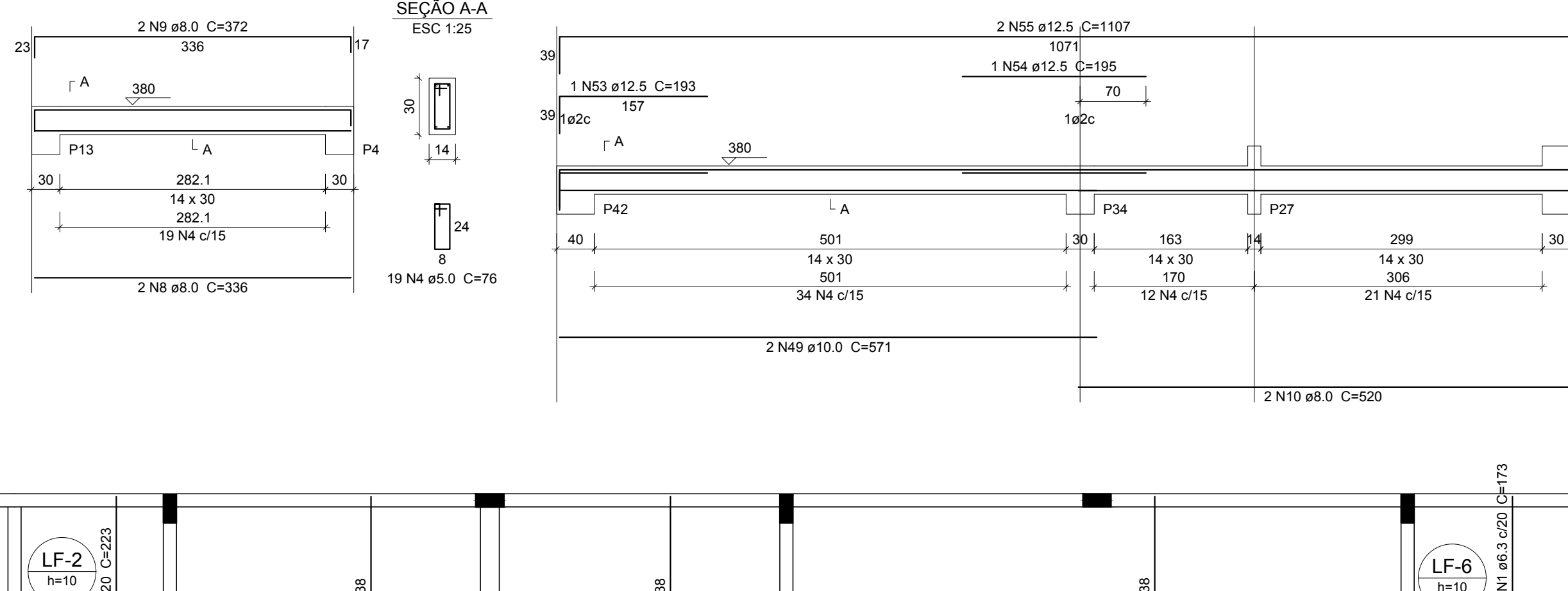
VF-21



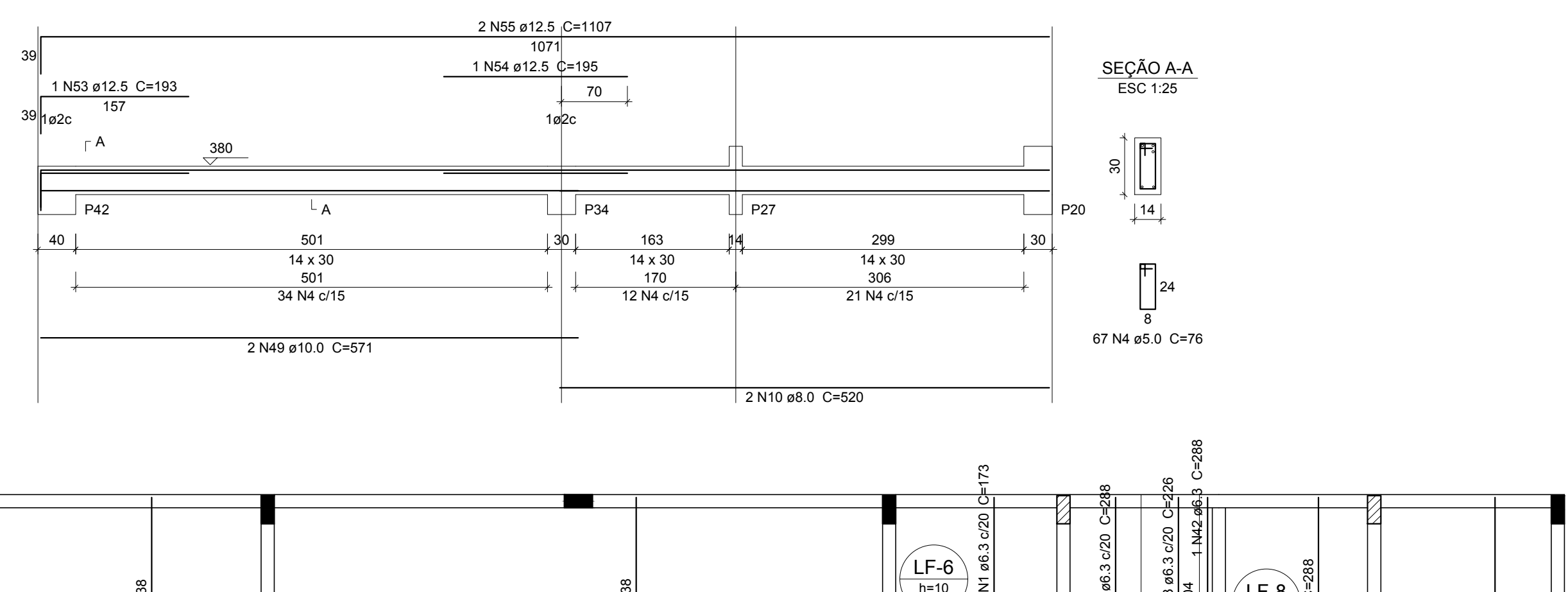
VF-22



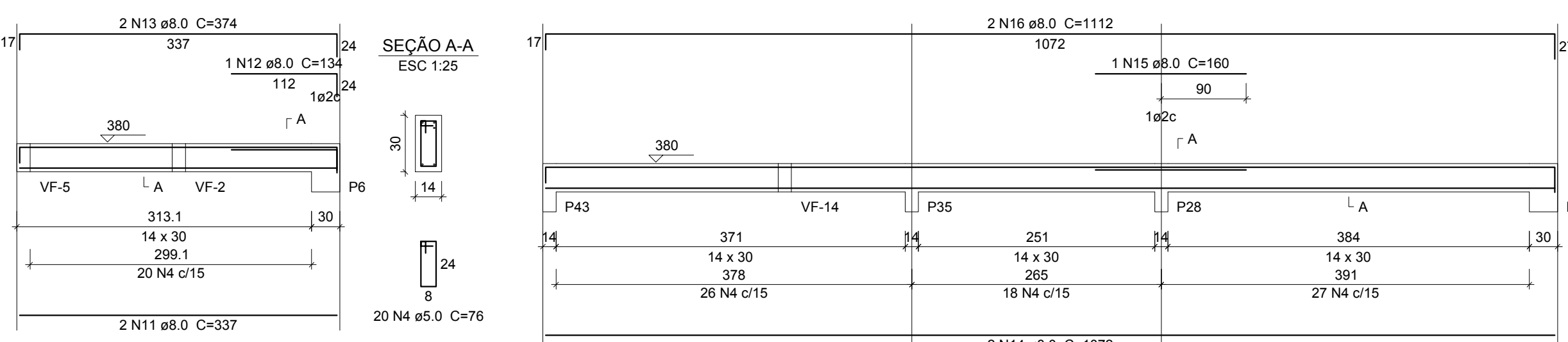
VF-23



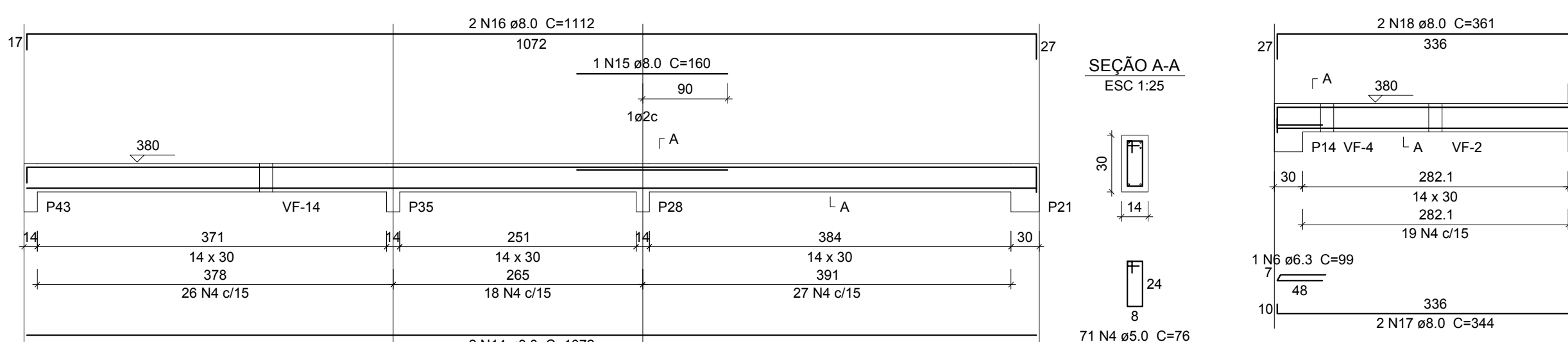
VF-24



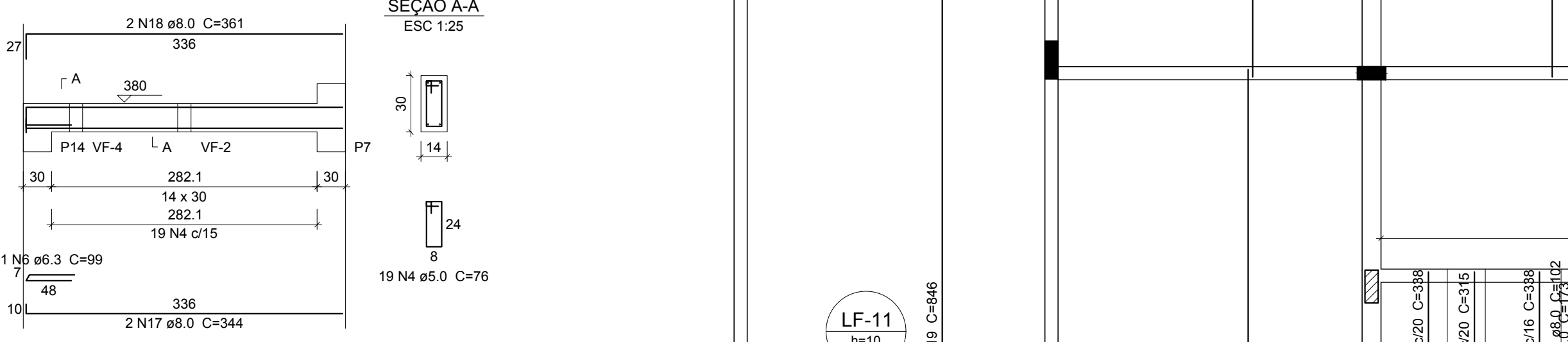
VF-25



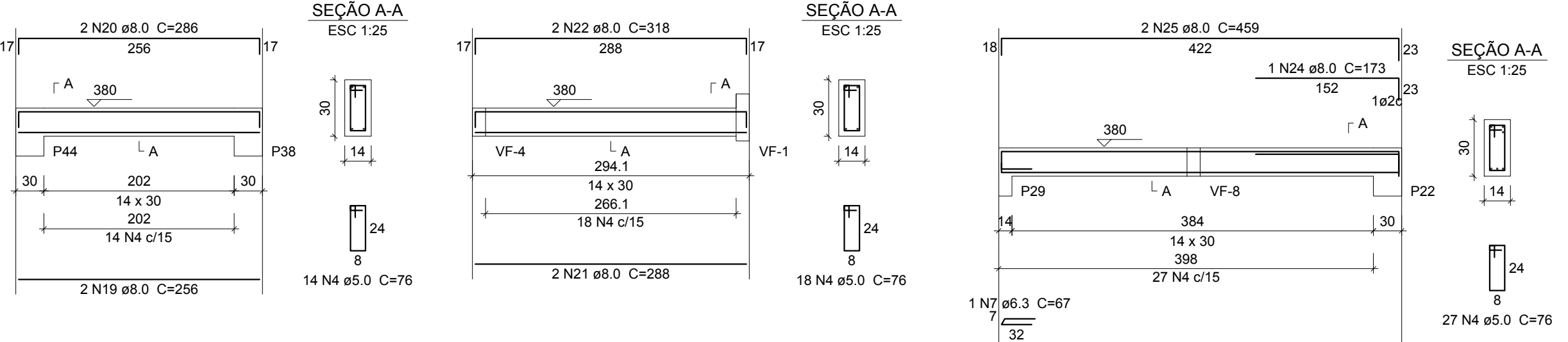
VF-26



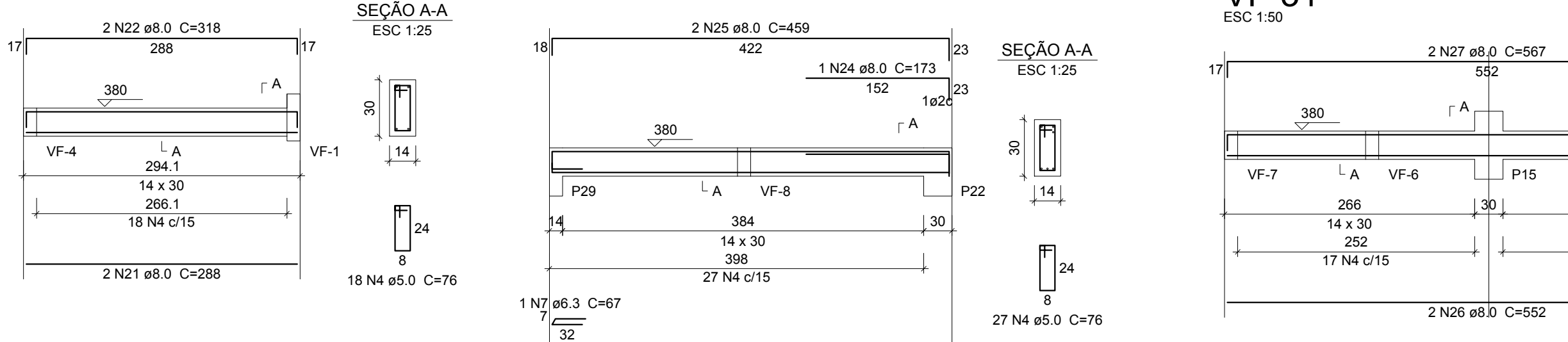
VF-27



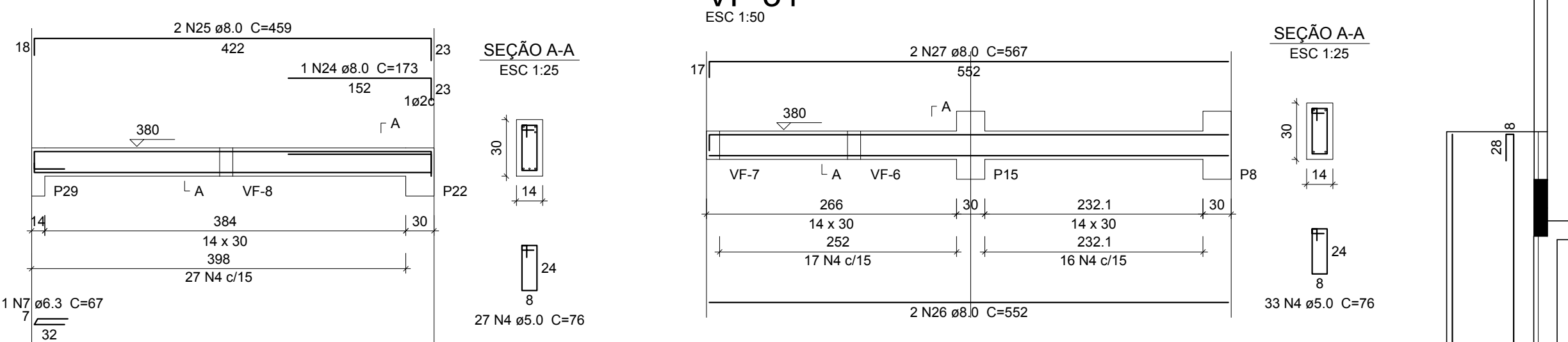
VF-28



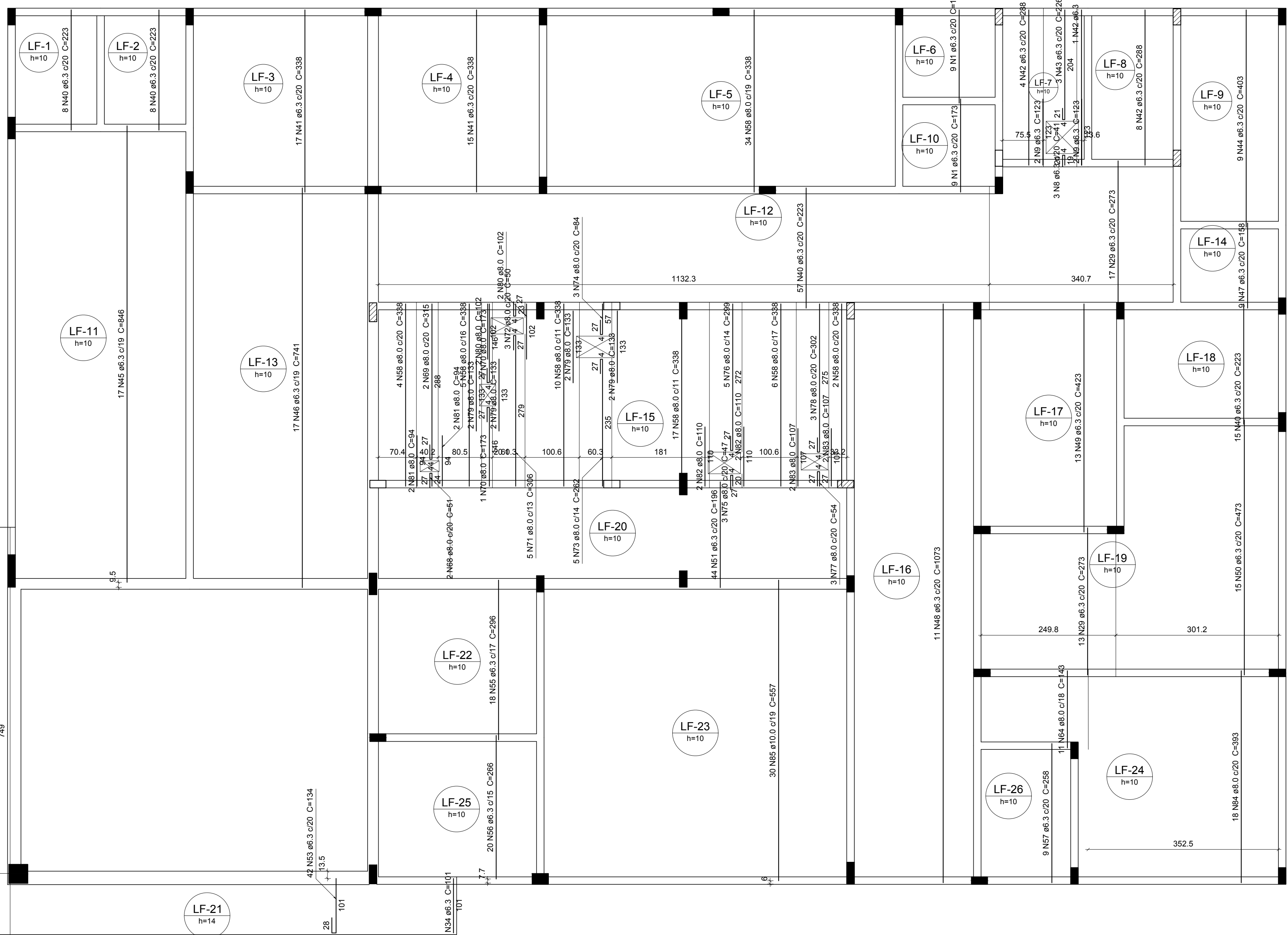
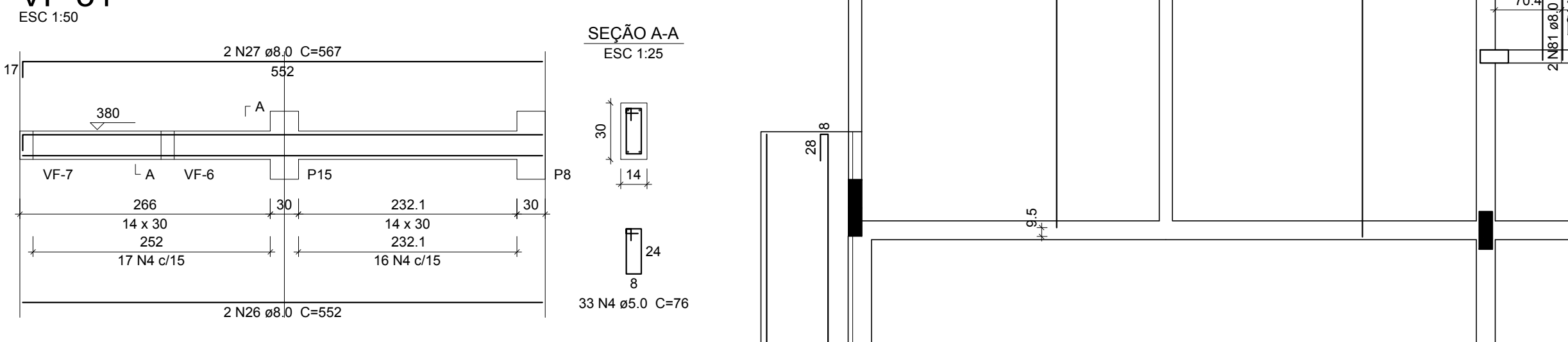
VF-29



VF-30



VF-31



Relação do aço

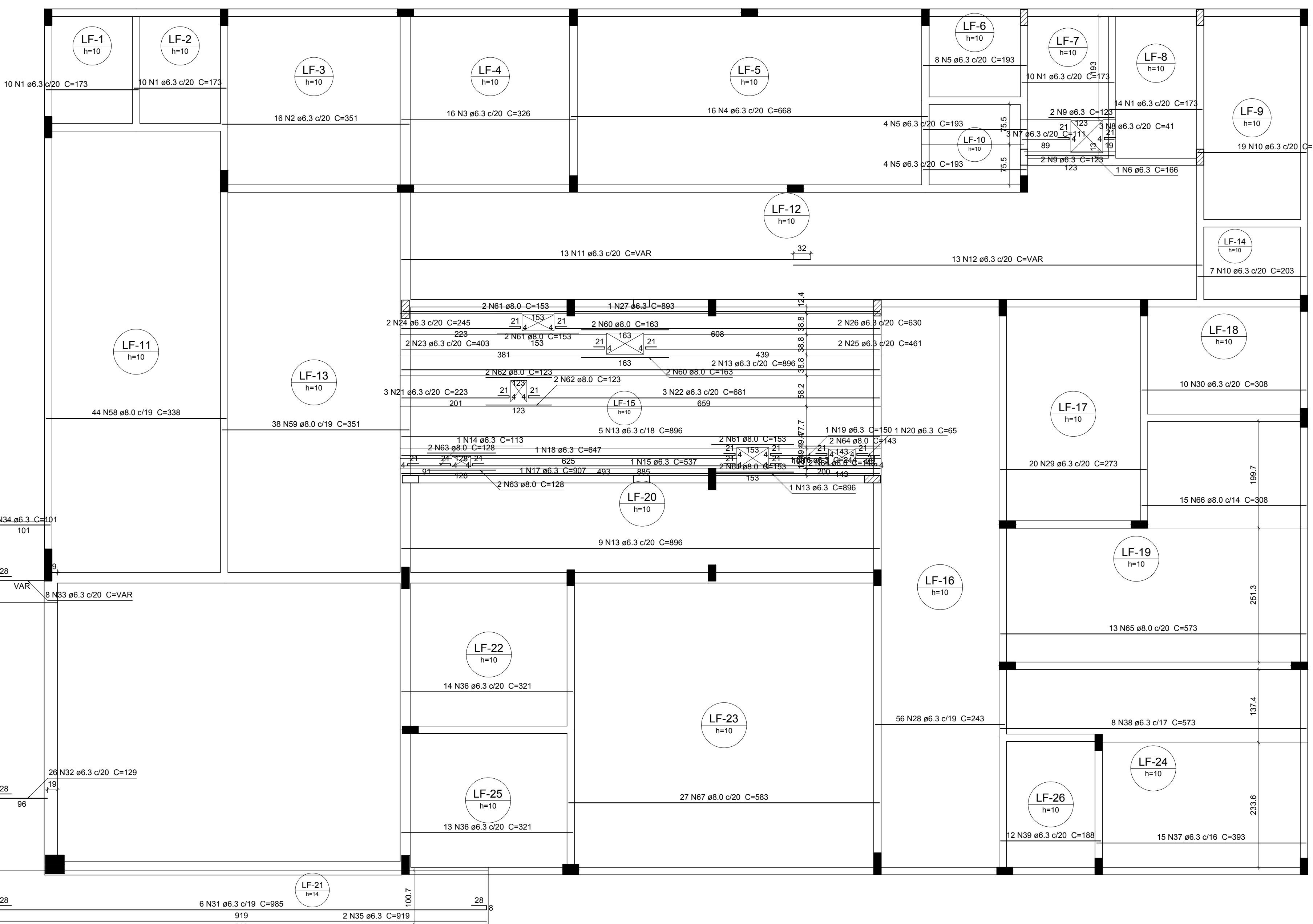
Positivo X	Positivo Y	Positivo Z	Positivo W	UNIT	C.TOTAL
CA50	1	6.3	62	173	10726
	2	6.3	16	351	5616
	3	6.3	16	326	5216
	4	6.3	16	668	10688
	5	6.3	16	193	3088
	6	6.3	1	166	166
	7	6.3	3	111	333
	8	6.3	6	41	246
	9	6.3	8	123	984
	10	6.3	1	61	61
	11	6.3	13	VAR	VAR
	12	6.3	17	VAR	VAR
	13	6.3	17	696	15222
	14	6.3	1	244	244
	15	6.3	1	537	537
	16	6.3	1	113	113
	17	6.3	1	907	907
	18	6.3	1	647	647
	19	6.3	1	150	150
	20	6.3	1	65	65
	21	6.3	3	223	669
	22	6.3	3	681	2043
	23	6.3	2	403	806
	24	6.3	2	245	490
	25	6.3	2	481	962
	26	6.3	2	630	1260
	27	6.3	2	893	1786
	28	6.3	56	243	13608
	29	6.3	60	273	16380
	30	6.3	10	308	3080
	31	6.3	8	988	9880
	32	6.3	8	354	3540
	33	6.3	8	VAR	VAR
	34	6.3	4	404	1616
	35	6.3	2	919	1838
	36	6.3	27	1667	45009
	37	6.3	15	393	9885
	38	6.3	8	573	4584
	39	6.3	12	338	4056
	40	6.3	88	223	19624
	41	6.3	13	338	4056
	42	6.3	13	288	3744
	43	6.3	17	846	14382
	44	6.3	34	196	8624
	45	6.3	9	158	1422
	46	6.3	11	1073	11803
	47	6.3	13	423	5499
	48	6.3	16	473	7568
	49	6.3	5	815	4075
	50	6.3	42	134	5628
	51	6.3	2	749	1498
	52	6.3	2	528	1056
	53	6.3	20	266	5320
	54	6.3	9	258	2322
	55	6.3	122	338	41256
	56	6.3	38	351	13338
	57	6.3	4	163	652
	58	6.3	8	153	1224
	59	6.3	4	123	492
	60	6.3	138	512	7056
	61	6.3	15	143	2145
	62	6.3	13	7449	16482
	63	6.3	15	308	4620
	64	6.3	27	583	15714
	65	6.3	2	51	102
	66	6.3	2	315	630
	67	6.3	2	173	346
	68	6.3	5	306	1530
	69	6.3	3	84	252
	70	6.3	5	262	1310
	71	6.3	5	100	500
	72	6.3	3	47	141
	73	6.3	3	141	423
	74	6.3	3	299	1495
	75	6.3	3	153	459
	76	6.3	3	352	1056
	77	6.3	3	54	162
	78	6.3	3	209	627
	79	6.3	4	164	656
	80	6.3	4	102	408
	81	6.3	4	376	1504
	82	6.3	4	110	440
	83	6.3	4	107	428
	84	6.3	18	203	3654
	85	10.0	30	557	16710

**Resumo do aço**

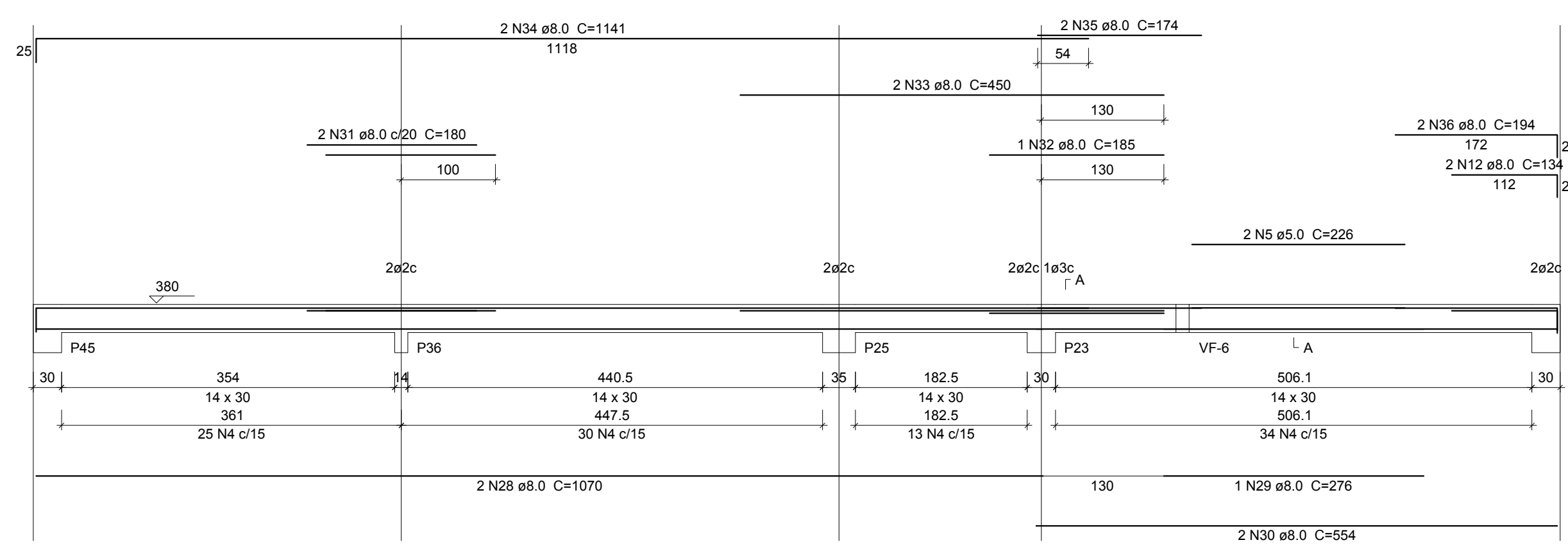
AÇO	DIAM	C.TOTAL	PESO + 10%
CA50	6.3	2766.1	741.6
	8.0	1042.3	452.4
	10.0	157.1	113.3
<b>PESO TOTAL</b>			<b>1307.3</b>
CA50	1307.6		

Vol. de concreto total (C-30) = 33.46 m³  
Área de forma total = 331.29 m²

Armação positiva das lajes do pavimento Forro (Eixo Y) escala 1:50



VF-32



Relação do aço

AÇO	N	DIAM	Q	UNIT	C.TOTAL
CA50	1	5.0	98	128	12288
	2	5.0	4	16	64
	3	5.0	2	227	454
	4	5.0	425	76	32300
	5	5.0	2	208	416
	6	6.3	1	99	99
	7	6.3	2	67	134
	8	6.3	2	336	672
	9	6.3	3	372	744
	10	6.3	2	520	1040
	11	6.3	2	337	674
	12	6.3	3	134	402
	13	6.3	2	374	748
	14	6.3	1	1072	2144
	15	6.3	1	160	160
	16	6.3	2	1112	2224
	17	6.3	2	344	688
	18	6.3	2	361	722
	19	6.3	2	256	512
	20	6.3	2	286	572
	21	6.3	2	286	572
	22	6.3	2	318	636
	23	6.3	3	430	1290
	24	6.3	1	173	173
	25	6.3	2	459	918
	26	6.3	2	552	1104
	27	6.3	2	987	1974

Resumo do aço

AÇO	DIAM	C.TOTAL	PESO + 10%
CA50	6.3	1.7	0.4
	8.0	251.2	109
	10.0	105.7	71.7
<b>PESO TOTAL</b>		<b>458</b>	<b>77.6</b>

Vol. de concreto total (C-30) = 4.53 m³  
Área de forma total = 70.67 m²

Armação positiva das lajes do pavimento Forro (Eixo X) escala 1:50

PREFEITURA:

CREA:

**U.F.U.**  
UNIVERSIDADE FEDERAL DE UBERLÂNDIA

TÍTULO: **MEDICINA NUCLEAR CAMPUS UMURAMA**  
CÁLCULO ESTRUTURAL

Rua Pedro Quirino da Silva Q13 LITS 10 e 12 Uberlândia - MG

ASSINATURAS:

PROPRIETÁRIO: UNIVERSIDADE FEDERAL DE UBERLÂNDIA  
CNPJ: 25.648.387/0001-18

AUTOR PROJETO: LEANDRO DANLO OLIVEIRA  
CREA: 171.281/D  
BFX ENGENHARIA LTDA

ÁREA TOTAL CONSTRUÍDA: 451.24 m²

BFX ENGENHARIA  
Fone: (034) 3224-3141  
Cel: (034) 9658-1234  
E-mail: leandro@bfx.eng.br

R. Mario Pinto Sobrinho, 312  
B. Santa Mônica - Uberlândia - MG.

CONTEUDO: ARMADURA VIGAS FORRO 01/02;  
ARMADURA POSITIVA LAJE FORRO;

ESCALA: INDICADAS  
DATA REVISÃO:  
DESENHO: **04/09**