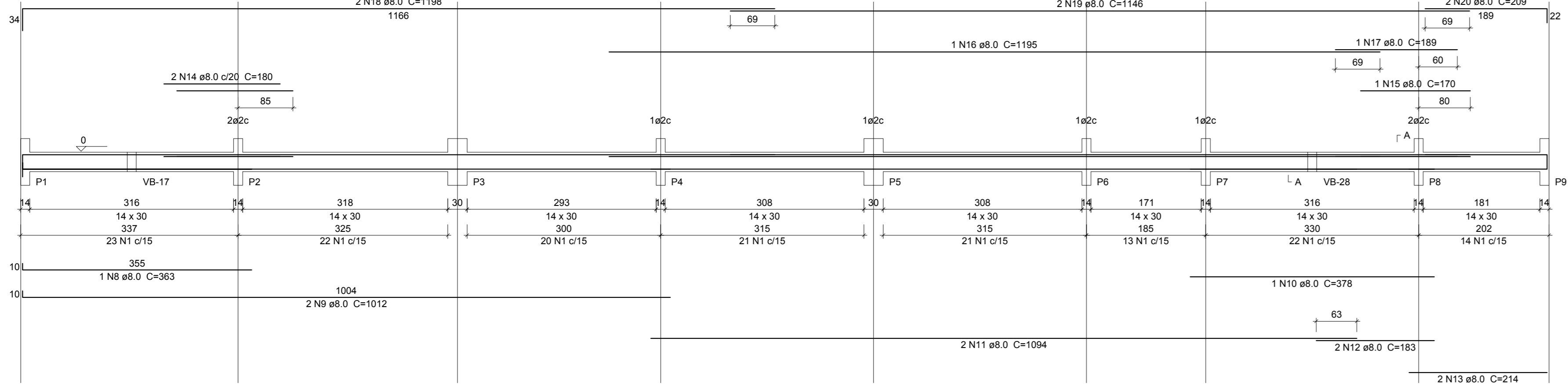
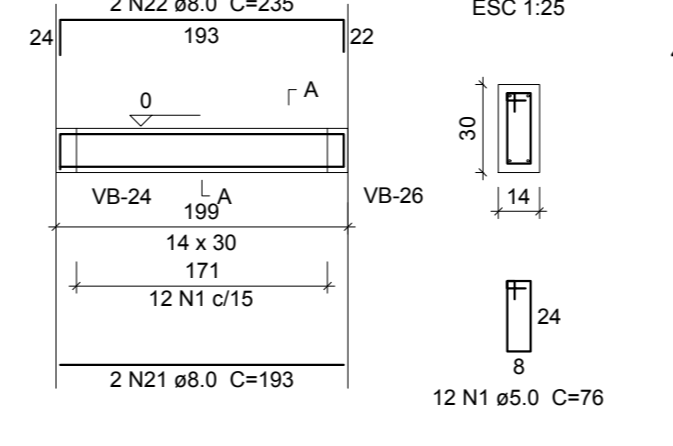


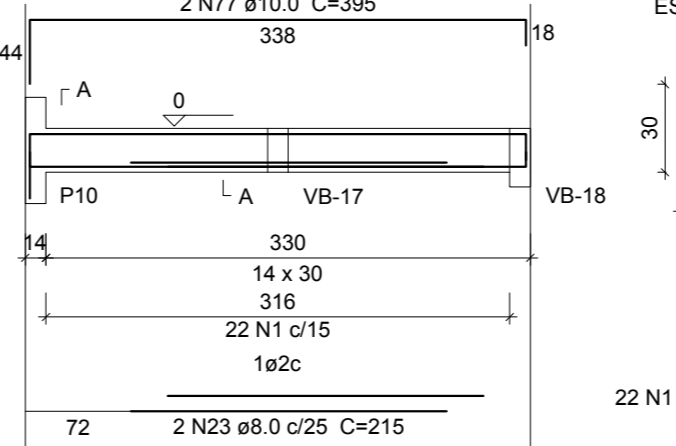
VB-1
ESC 1:50



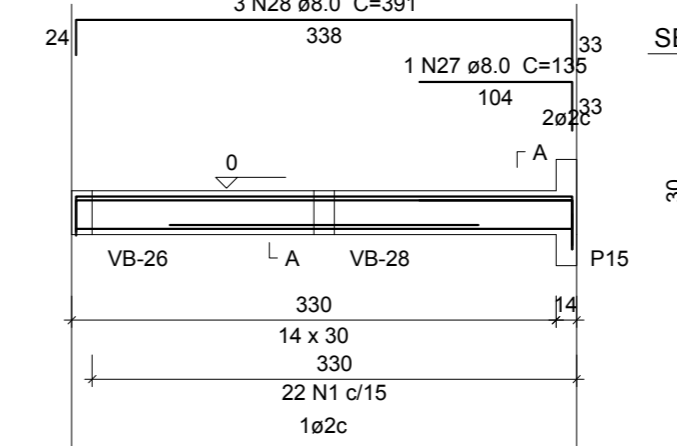
VB-2
ESC 1:50



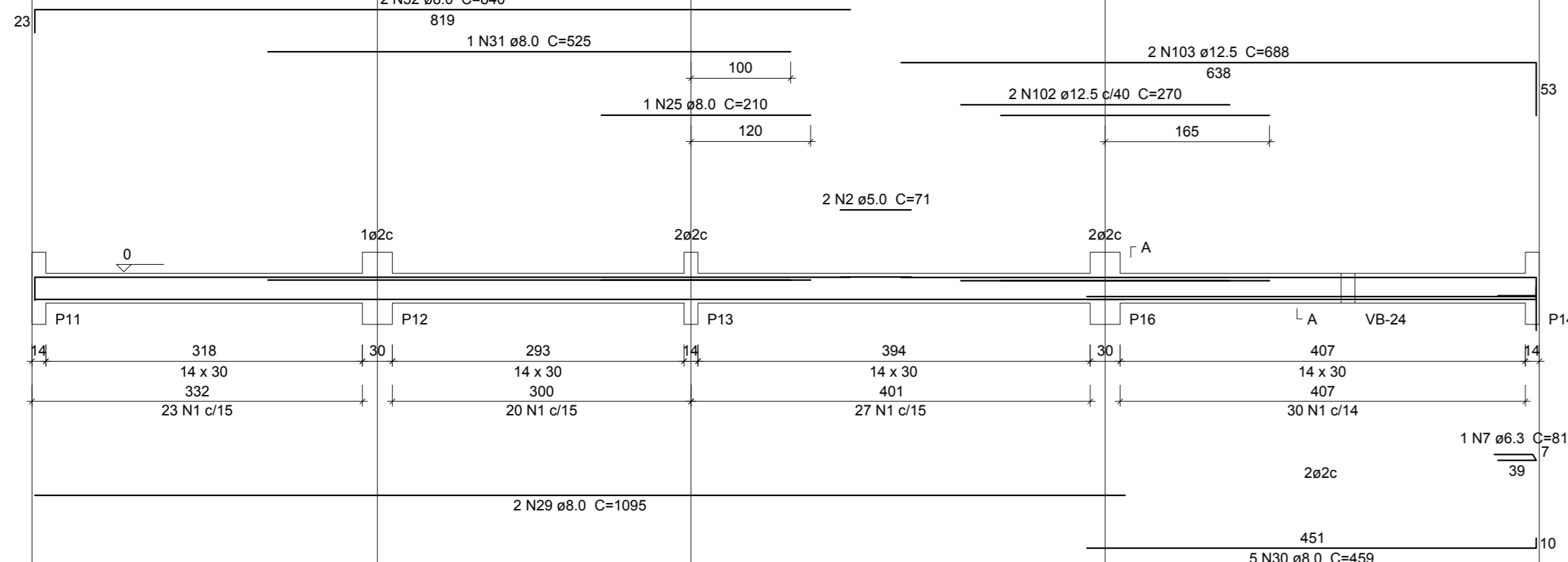
VB-3
ESC 1:50



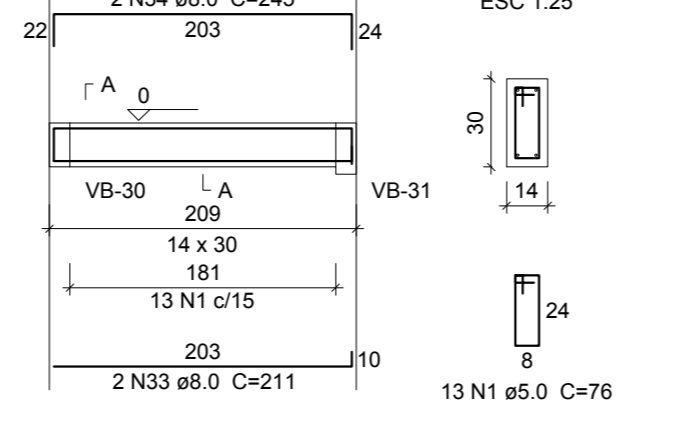
VB-4
ESC 1:50



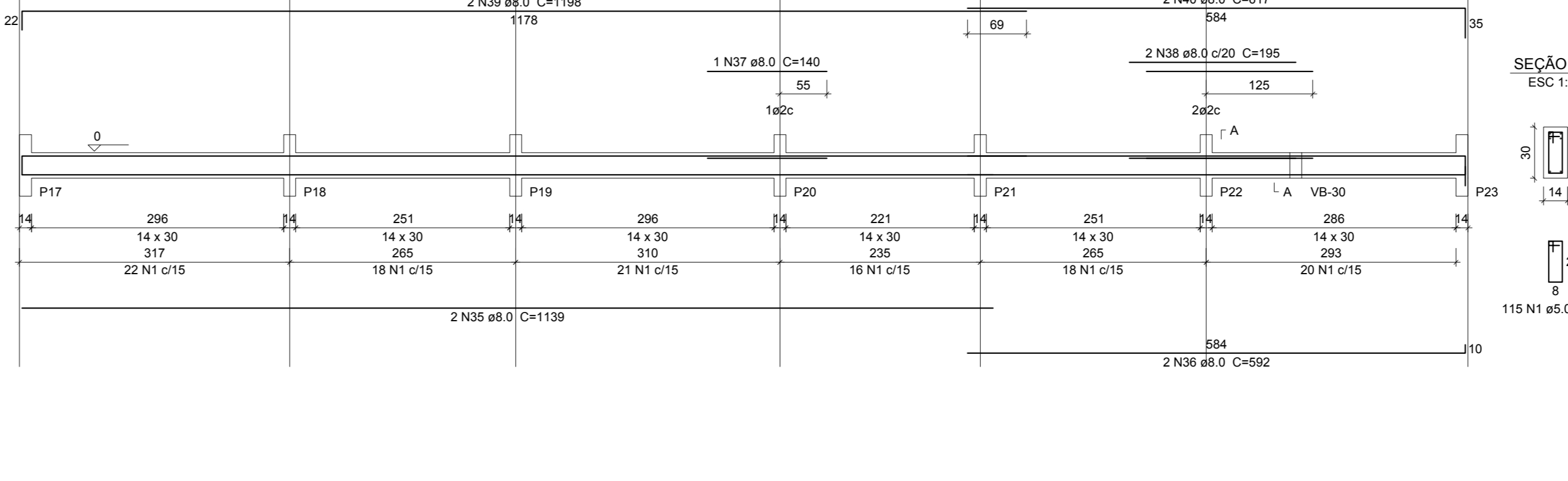
VB-5
ESC 1:50



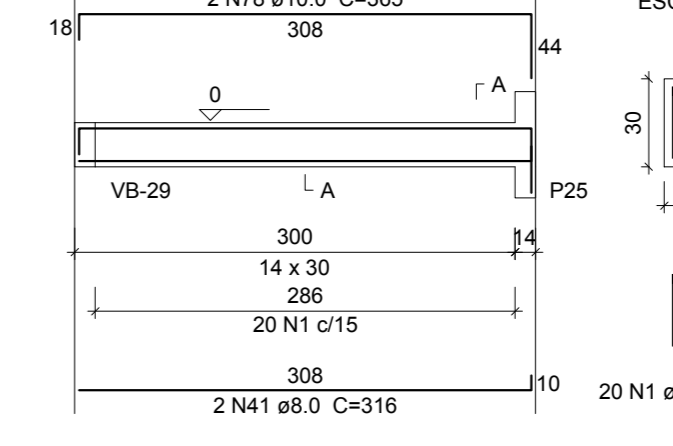
VB-6
ESC 1:50



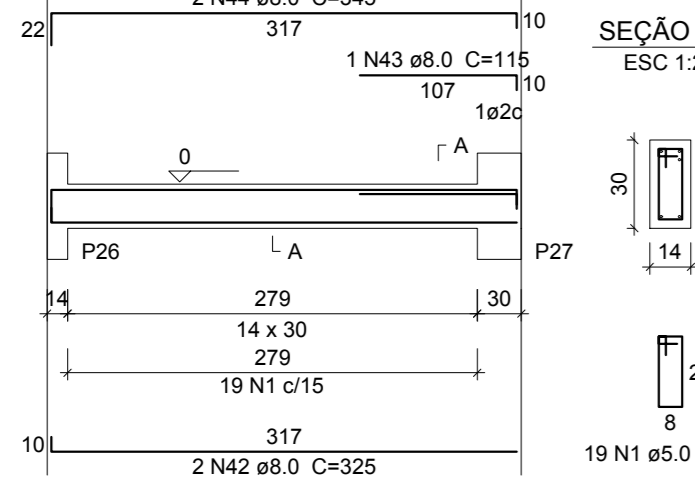
VB-7
ESC 1:50



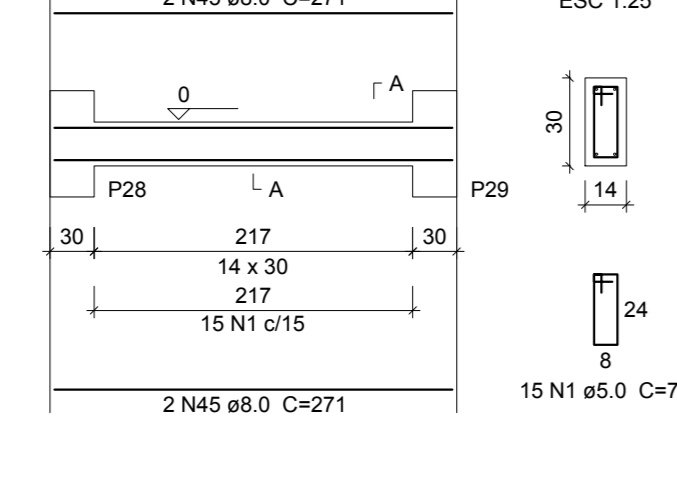
VB-8
ESC 1:50



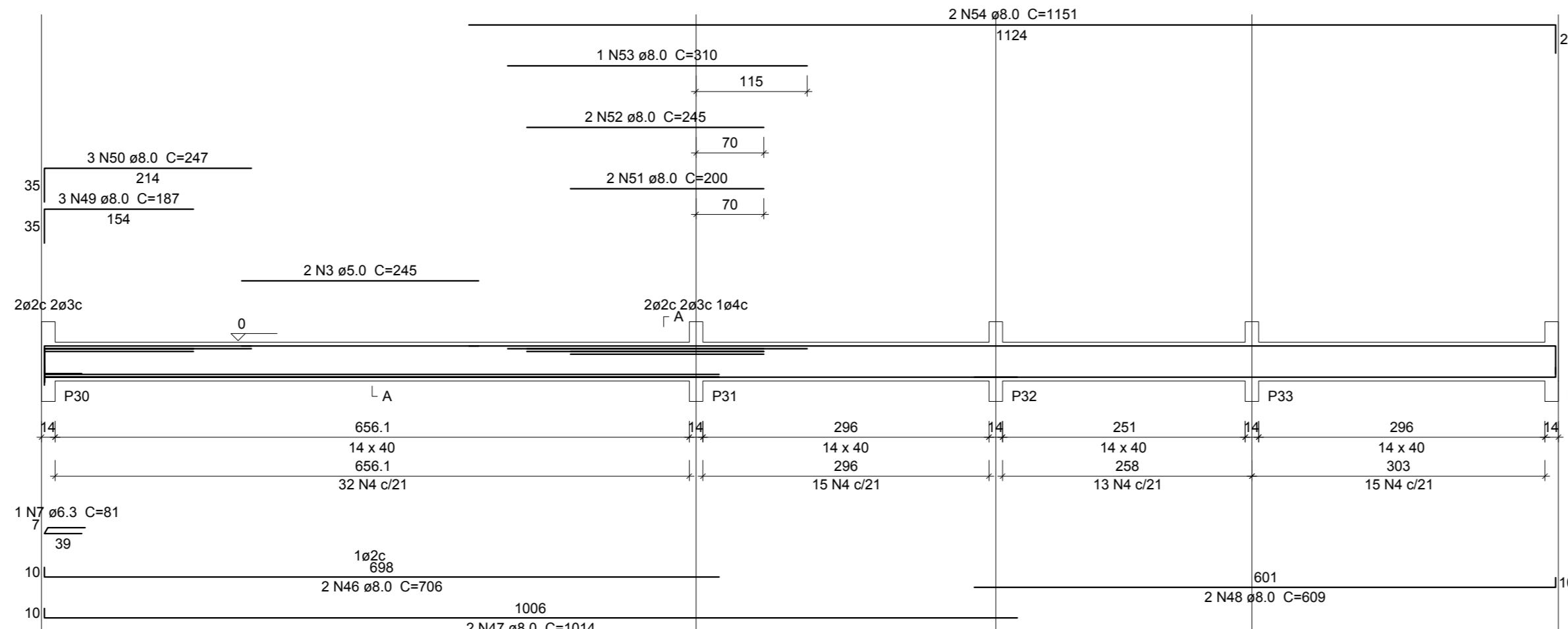
VB-9
ESC 1:50



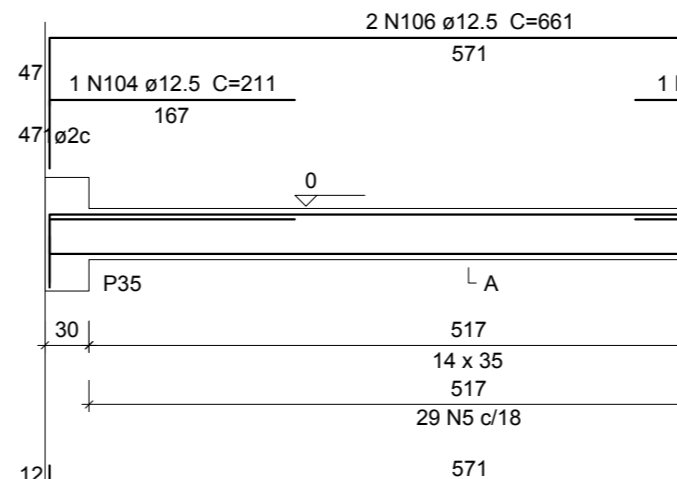
VB-10
ESC 1:50



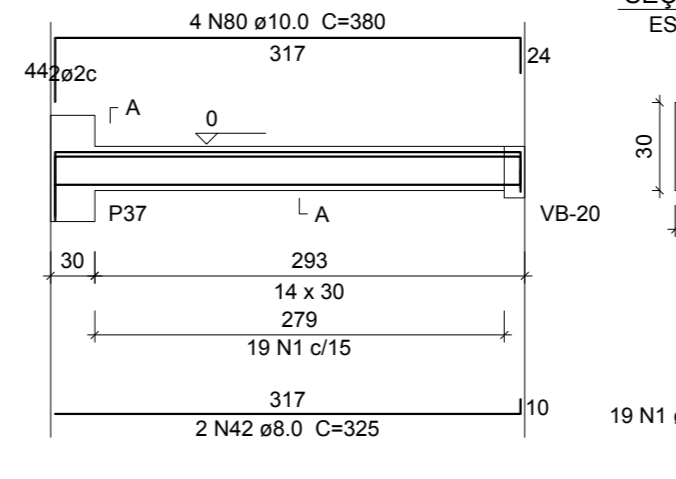
VB-11
ESC 1:50



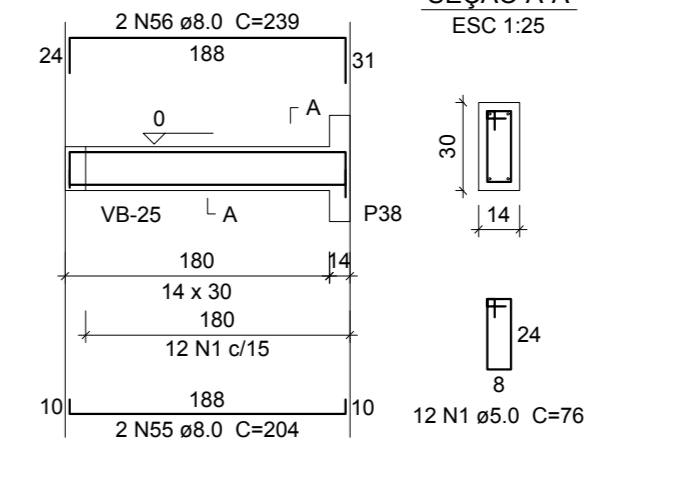
VB-12
ESC 1:50



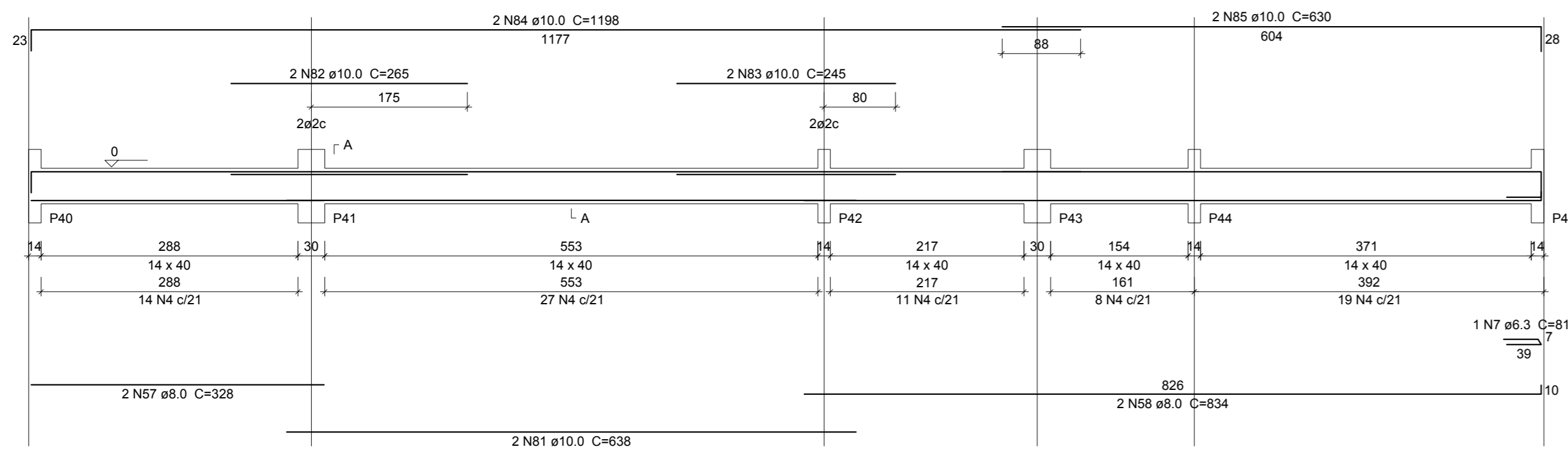
VB-13
ESC 1:50



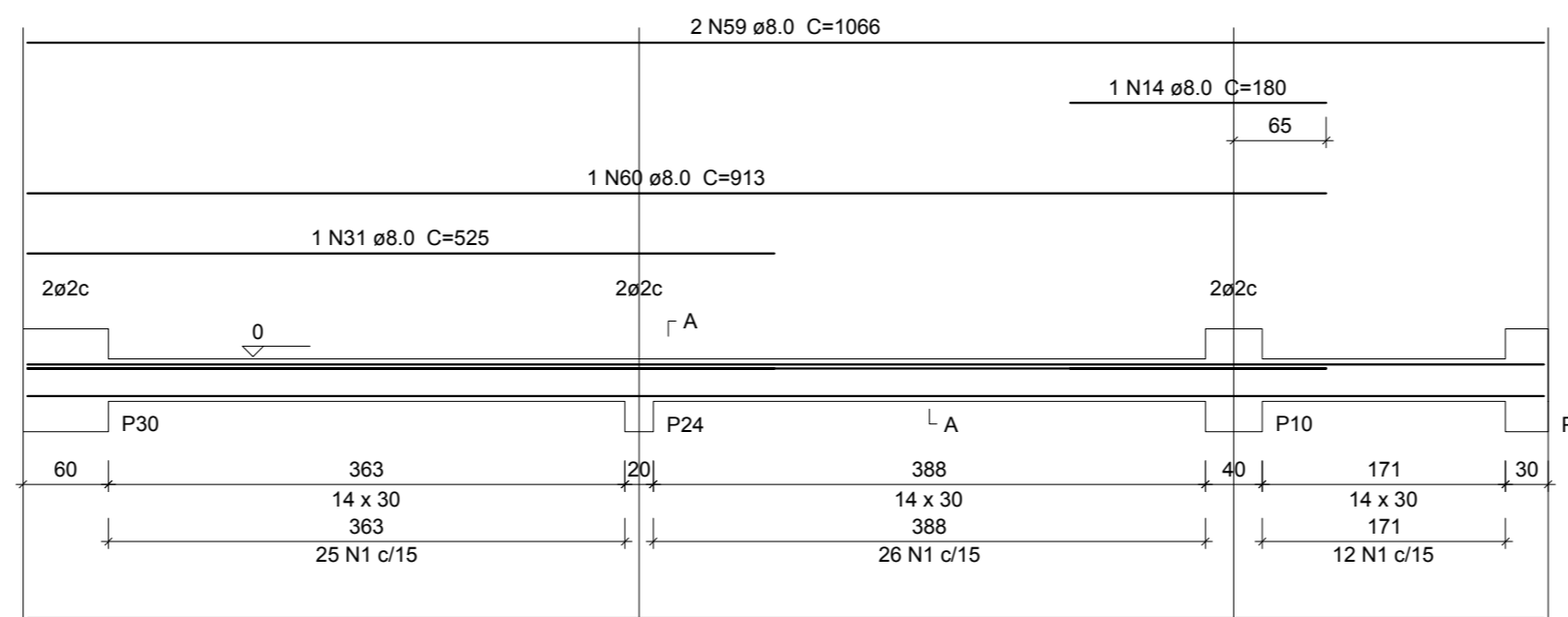
VB-14
ESC 1:50



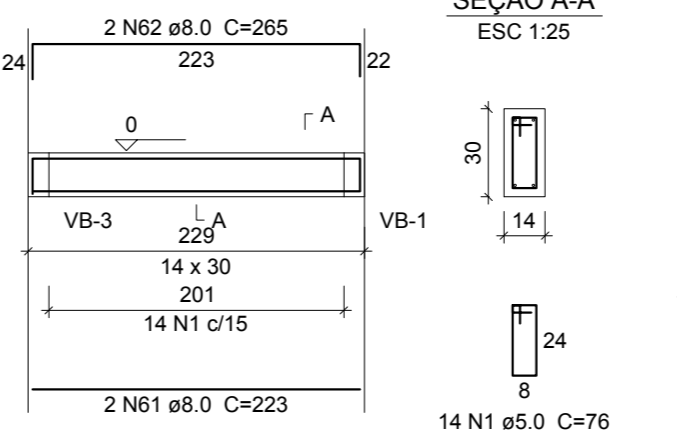
VB-15
ESC 1:50



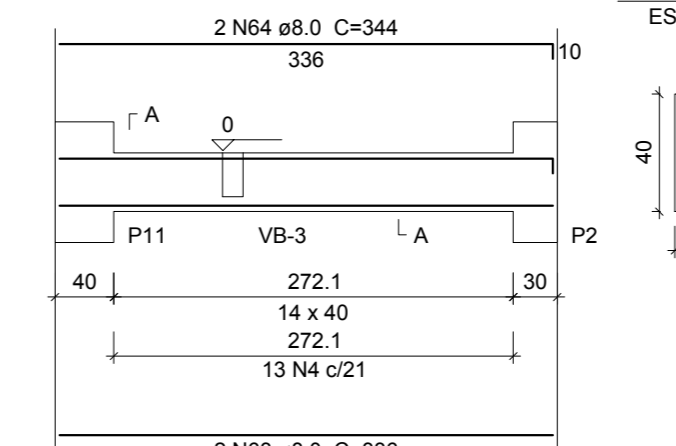
VB-16
ESC 1:50



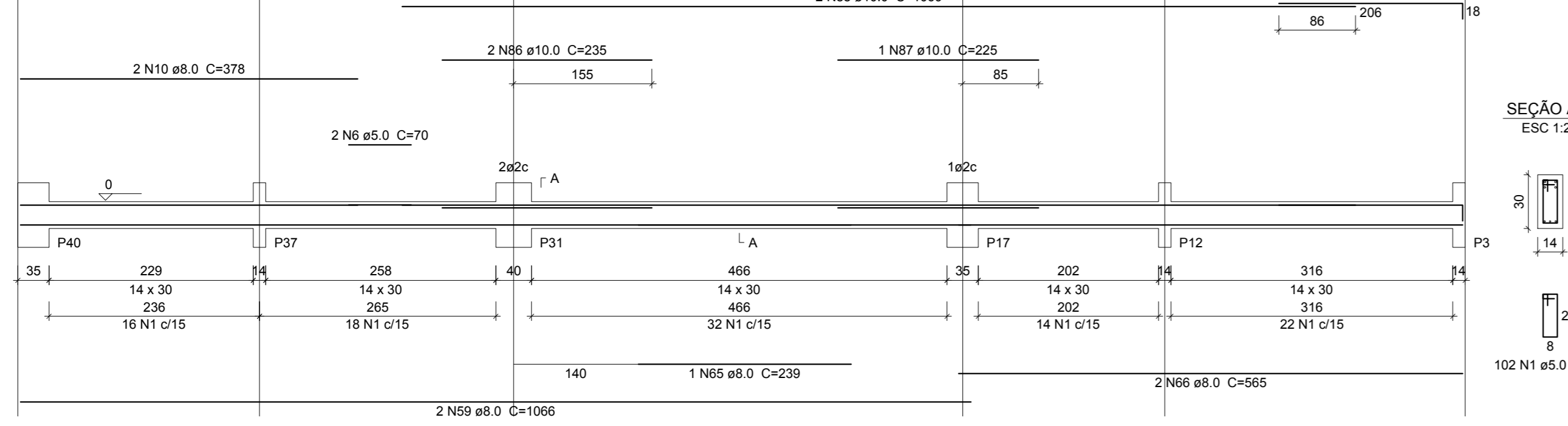
VB-17
ESC 1:50



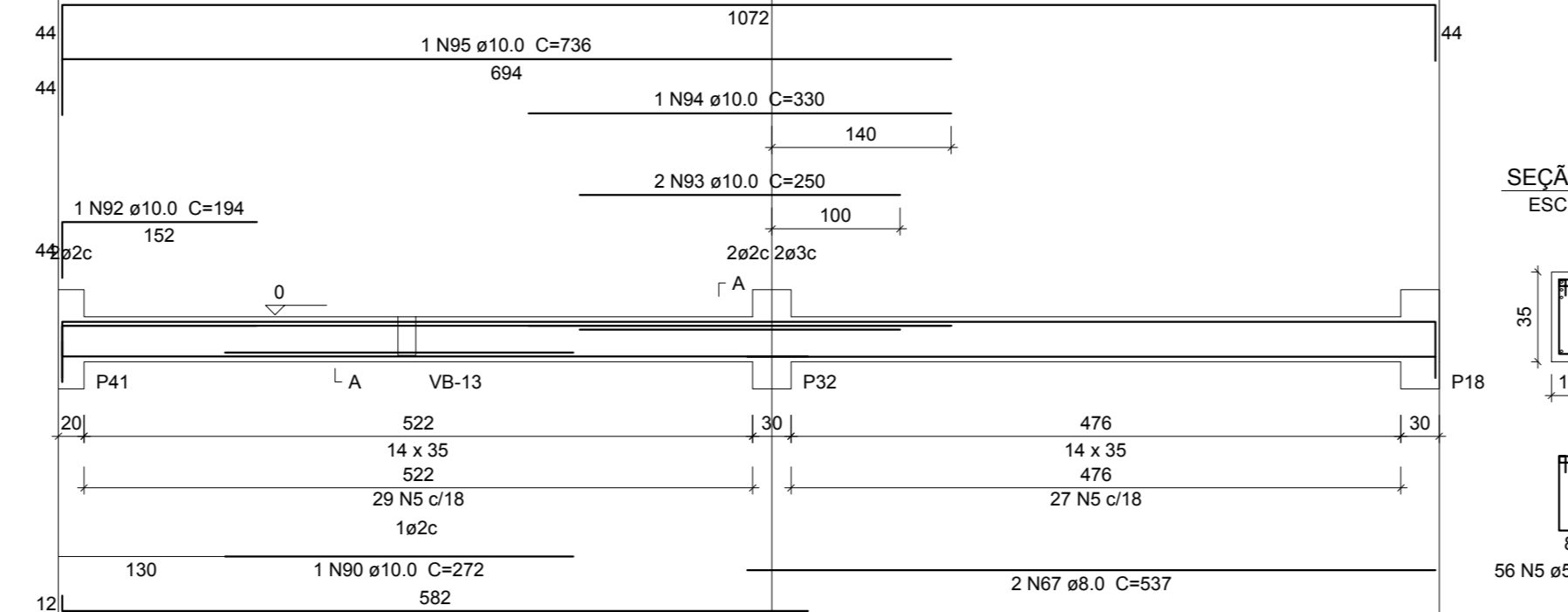
VB-18
ESC 1:50



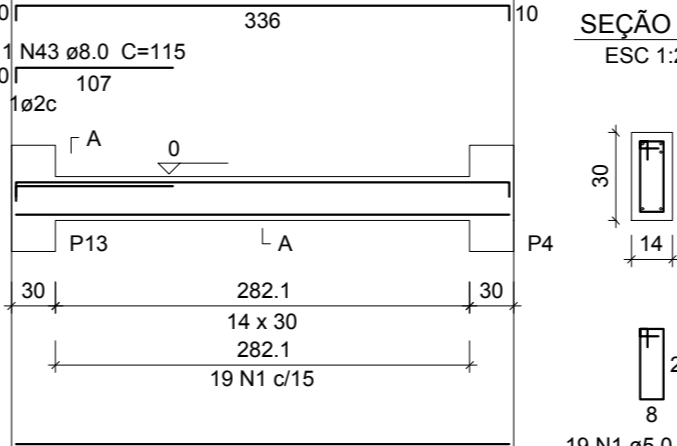
VB-19
ESC 1:50



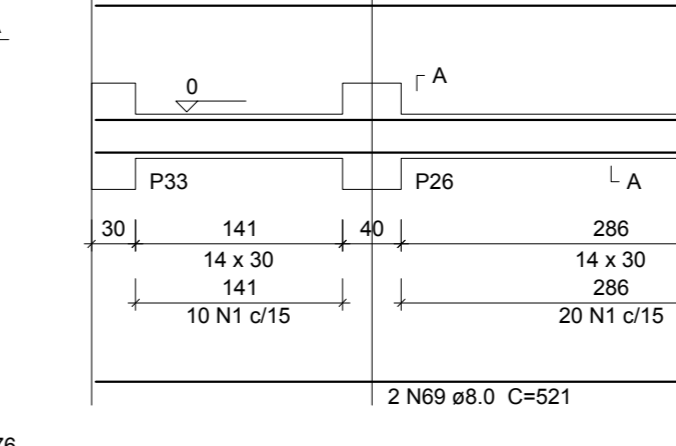
VB-20
ESC 1:50



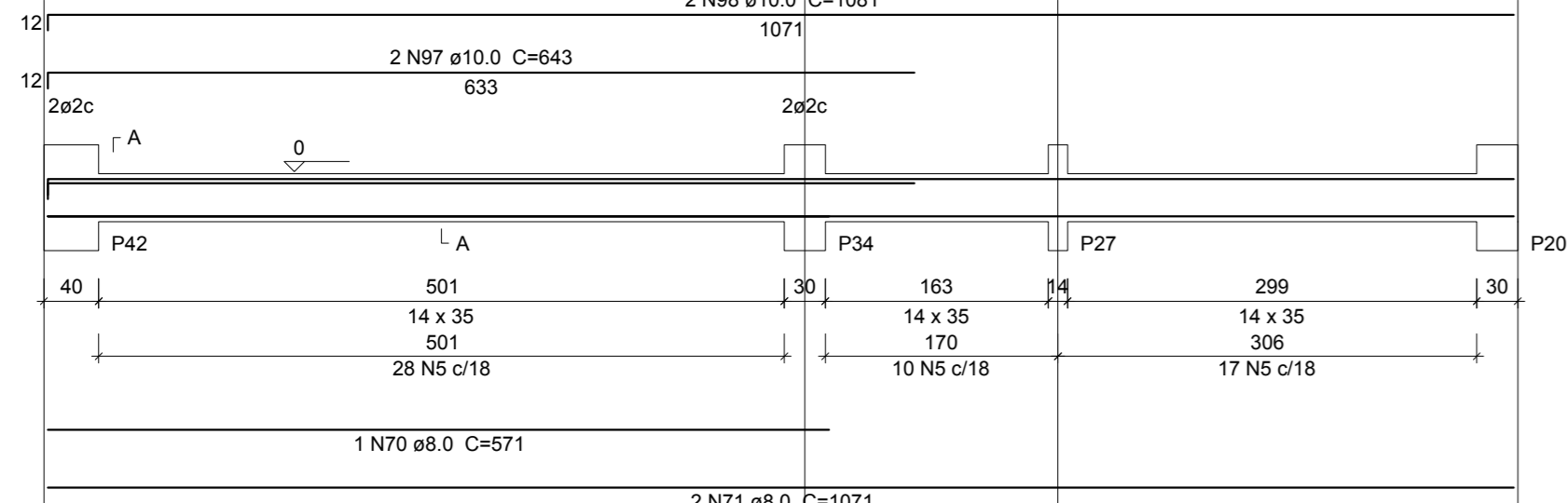
VB-21
ESC 1:50



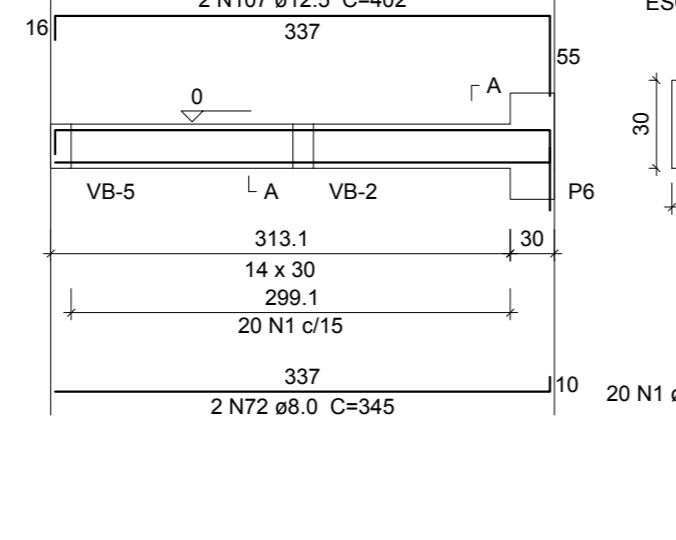
VB-22
ESC 1:50



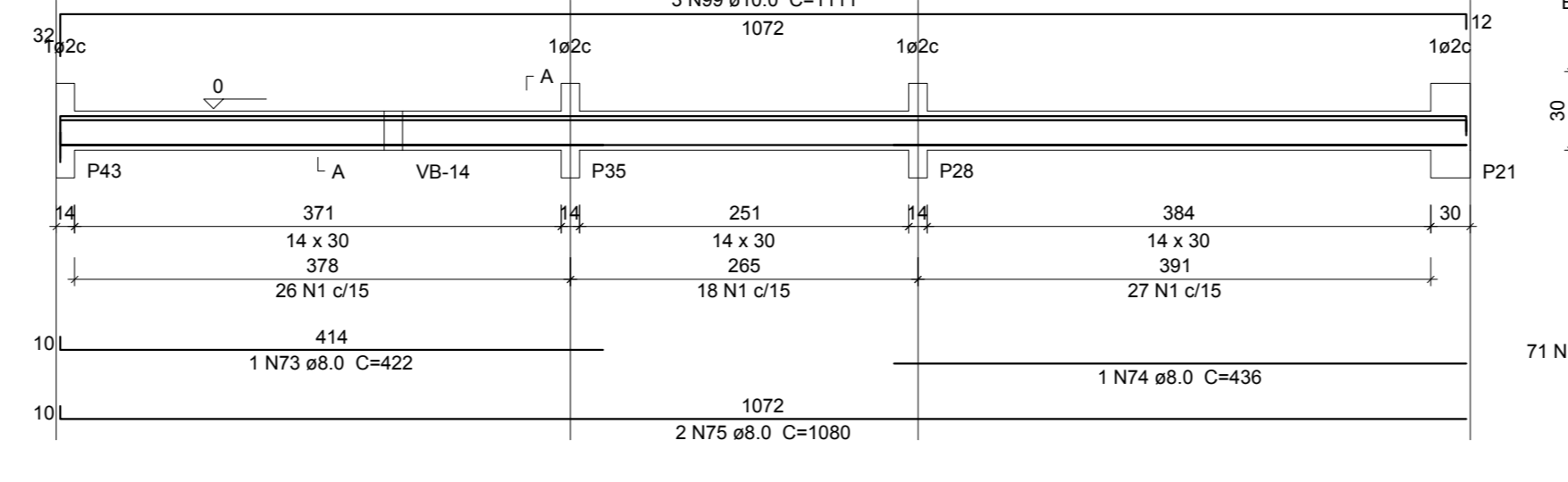
VB-23
ESC 1:50



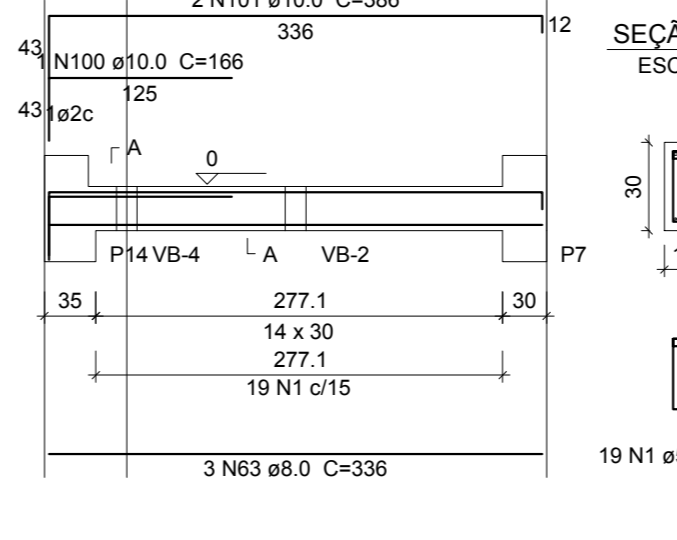
VB-24
ESC 1:50



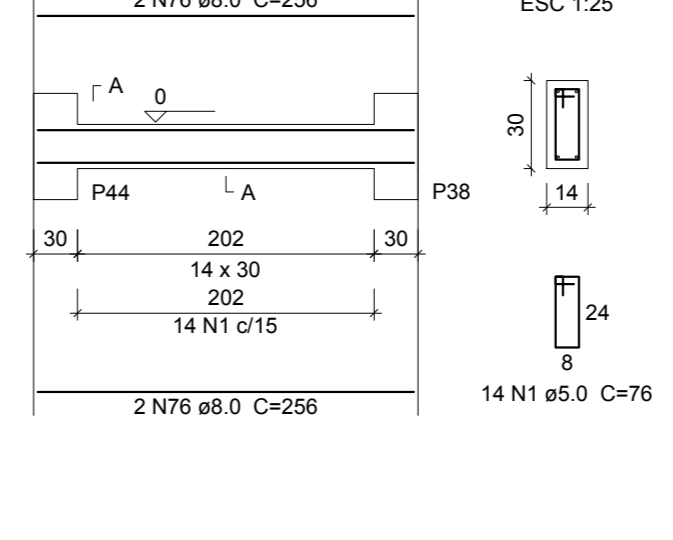
VB-25
ESC 1:50



VB-26
ESC 1:50



VB-27
ESC 1:50



Relação do aço

Table with columns: AÇO, DIAM, C.TOTAL, PESO + 10%, and C.TOTAL (cm). It lists steel specifications and weights for various beams (VB-1 to VB-27).

Summary table titled 'Resumo do aço' showing total steel weight and area for the project.

PREFEITURA: CREA: (Administrative fields for project registration)

Project information including U.F.U. logo, title 'MEDICINA NUCLEAR CAMPUS UBERLÂRAMA', address, and contact details for BFX ENGENHARIA.